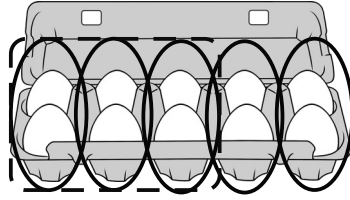


Brüche - Bruchteile bestimmen



(1) Durch den Nenner dividieren.

$\frac{3}{5}$ von 10 Eiern

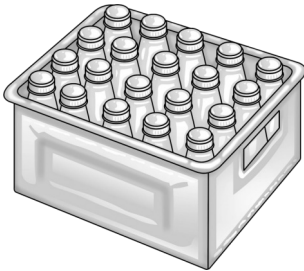
(2) Zwischenergebnis mit dem Zähler multiplizieren.

$$10 \text{ Eier} \xrightarrow{:5} 2 \text{ Eier} \xrightarrow{\cdot 3} 6 \text{ Eier}$$

$$\frac{3}{5} \cdot 10 \text{ Eier} = 6 \text{ Eier}$$

1 **Berechne** die Bruchteile.

a)

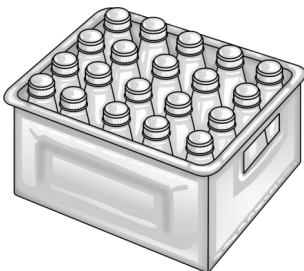


$\frac{4}{5}$ von 20 Flaschen (F)

$$20 \text{ F} \xrightarrow{:5} \dots \xrightarrow{\cdot 4} \dots \text{ F}$$

$$\frac{4}{5} \cdot 20 \text{ F} = \dots$$

b)

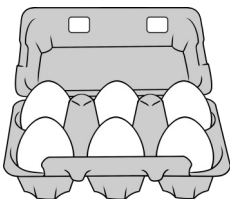


$\frac{3}{4}$ von 20 Flaschen (F)

$$20 \text{ F} \xrightarrow{:4} \dots \xrightarrow{\cdot 3} \dots \text{ F}$$

$$\frac{3}{4} \cdot 20 \text{ F} = \dots$$

c)

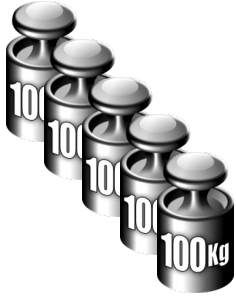


$\frac{2}{3}$ von 6 Eiern (E)

$$6 \text{ E} \xrightarrow{:3} \dots \xrightarrow{\cdot 2} \dots \text{ E}$$

$$\frac{2}{3} \cdot 6 \text{ E} = \dots$$

d)



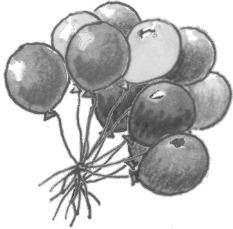
$\frac{2}{5}$ von 500 kg

$$500 \text{ kg} \xrightarrow{\cdot \frac{2}{5}}$$

.....

.....

e)



$\frac{5}{6}$ von 12 Ballons (B)

$$12 \text{ B} \xrightarrow{\cdot \frac{5}{6}}$$

.....

.....

f)



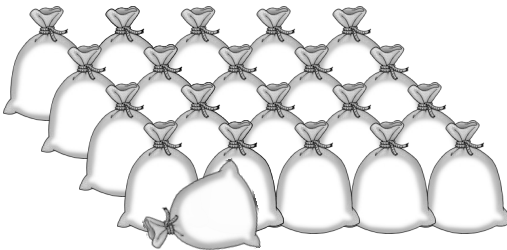
$\frac{3}{8}$ von 16 Autos (A)

$$16 \text{ A} \xrightarrow{\cdot \frac{3}{8}}$$

.....

.....

g)



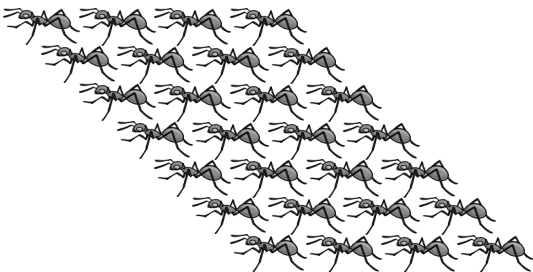
$\frac{3}{7}$ von 21 Säcken (S)

$$21 \text{ S} \xrightarrow{\cdot \frac{3}{7}}$$

.....

.....

h)



$\frac{4}{7}$ von 28 Ameisen (A)

$$28 \text{ A} \xrightarrow{\cdot \frac{4}{7}}$$

.....

.....

i)



$\frac{3}{4}$ von 2 Litern Milch (l)

$$2 \text{ l} \xrightarrow{\cdot \frac{3}{4}}$$

.....

.....